

PowerPlay™ Trax

FIXED RESILIENT SYSTEM

Prefabricated PowerPlay™ Trax panels are manufactured with specifically aligned bilateral ribs to pinch high-density resilient cushioning from above and below. In addition to reacting quickly to athletic impacts, segmented pressure points dampen vibration and contain impacts from spreading outward. PowerPlay™ Trax provides excellent uniformity and includes substrate anchorage for added environmental stability.



INFINITY
Wood Floors



AACER
SPORTS FLOORING

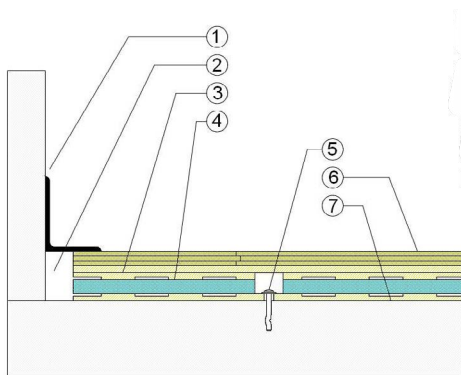


PowerPlay™ Trax provides high shock absorption and basketball rebound, uniform performance, and low vibration.



- | | |
|--------------------------------|---------------------------|
| 1. Infinity MFMA Maple | 4. Resilient Trax Cushion |
| 2. Trax Plate Anchored to Slab | 5. Vapor Retarder |
| 3. Pre-manufactured Trax Panel | 6. Concrete Substrate |

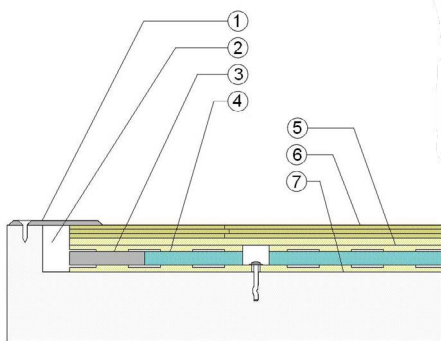
WALL BASE



- 3" x 4" (76mm x 101mm) Vent Cove Base
- 1 1/2" (38mm) Min. Expansion Space
- PowerPlay Trax Subfloor Panel
- Trax Resilient Cushion
- Concrete Anchor Pin Assembly
- 25/32" (20mm) MFMA Maple Flooring
- Vapor Retarder

2 1/2" (64mm)

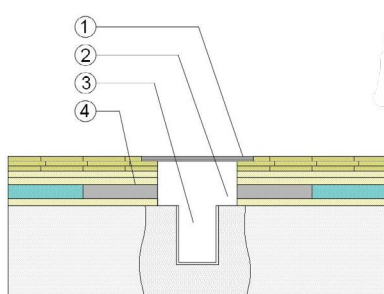
THRESHOLD



- 1/4" (6mm) Aluminum Threshold
- 1 1/2" (38mm) Min. Expansion Space
- Solid Blocking at Doorway
- Trax Resilient Cushion
- PowerPlay Trax Subfloor Cushion
- 25/32" (20mm) MFMA Maple Flooring
- Vapor Retarder

2 1/2" (64mm)

EQUIPMENT



- Floor Plate
- 1 1/2" (38mm) Min. Expansion Space Required at all Insert & Electrical Penetrations
- Concrete Floor Penetration
- Solid Blocking at Insert

Certification



Anchorage

Steel Drive Pin / Lateral Movement Allowed

Green Status and LEED Contributors



- FSC® Certified Maple - MR
- FSC® Certified Subfloor Components - MR
- Environmental Quality - EQ
- Regional Materials - MR

Resilience

3/4" (19mm) Blanket Cushion

Slab Depression

- 25/32" (20mm) flooring - 2-1/2" (64mm)

Optional PowerPlay™ Systems

PowerPlay™ Panel
PowerPlay™ Edge
PowerPlay™ Cradle
PowerPlay™ TP

Subfloor Construction

Pre-manufactured panels

System Type

Fixed Resilient

Testing Laboratory Partners



System Design



It is the policy of Infinity Wood Floors to continuously improve its line of products. Therefore, Infinity Wood Floors reserves the right to change, modify or discontinue systems, specifications and accessories of all products at any time without notice or obligation to purchaser.